

Crab Rules

CRAB: When harvesting Dungeness Crab in *Puget Sound only*, a catch record card (CRC) and a crab endorsement are required. Any harvest after Labor Day must be recorded on a winter CRC. Refer to CRC rules on page 8. A \$10.00 penalty will be added to the cost of your next Puget Sound crab endorsement if you fail to either return your cards by mail or report your catch information on the Internet (<https://fishhunt.dfw.wa.gov>) by the deadline printed on each card. Must release all softshell crab (underside of shell flexes with finger pressure - see below). Fishing instruments must not penetrate the shell. It is unlawful to possess crab in the field without retaining the back shell. May not retain any species of crab other than Dungeness, Red Rock, and Tanner. See rules below.

Dungeness, Red Rock, and Tanner Crab Daily Limits and Rules:

Puget Sound has a daily limit of 5 Dungeness Crab, 6¼" minimum size, males only, and in hardshell condition.

Puget Sound has a daily limit of 6 Tanner Crab, 4½" minimum size, of either sex, and in hardshell condition. Measure at the widest portion of the shell.

Columbia River has a daily limit of 12 Dungeness Crab, 5¾" minimum size, males only, and in hardshell condition.

Pacific Ocean has a daily limit of 6 Dungeness Crab, 6" minimum size, males only, and in hardshell condition.

All Areas have a daily limit of 6 Red Rock Crab, 5" minimum size, of either sex.

Prior to harvesting, see additional crab gear rules on page 135, check the Shellfish Rule Change toll-free Hotline, (866) 880-5431, or visit <http://wdfw.wa.gov> for season openings, closures, and restrictions.

AREA	SPECIES	SEASON / OPENING DAYS AND TIMES / ADDITIONAL RULES
PUGET SOUND Marine Areas 4 (east of the Bonilla-Tatoosh line), 5, 6, 7 South, 7 North, 8-1, 8-2, 9, 10, 11, 12, and 13 Marine Areas 7 South and 7 North (See map next page)	DUNGENESS, RED ROCK, and TANNER Crab	For seasons go to: http://wdfw.wa.gov/fishing/shellfish/crab/ or refer to the toll-free shellfish rule change hotline (866) 880-5431. The season dates will be announced and available in May/June for the summer season, and October 1 for the winter season. <i>All DUNGENESS crab kept must be immediately recorded on a catch record card in ink (see page 8).</i>
COLUMBIA RIVER East of a line from exposed end of north and south jetty upstream to a line between Tongue Point and Rocky Point	DUNGENESS and RED ROCK Crab	Open year-round to all gear. Crab fishers may fish for crab in Oregon waters under Oregon rules and land into Washington ports of the Columbia River. A resident license from either state is required.
PACIFIC OCEAN Grays Harbor, Willapa Bay, and Marine Areas 1-3 and 4 (west of Bonilla-Tatoosh line)	DUNGENESS and RED ROCK Crab	Open December 1 to September 15 for Pot Gear. Open year-round to other gear.

How to Measure for Minimum Size

Caliper measurement at the widest part of the shell just in front of rear-most point or tips.



MEASURE HERE



DO NOT INCLUDE THE LAST SET OF POINTS WHEN MEASURING SIZE

Dungeness Crab



White-tipped claws, brownish shell

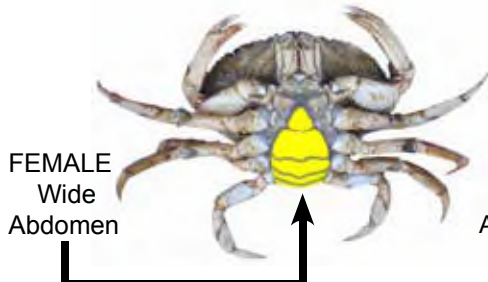
Red Rock Crab



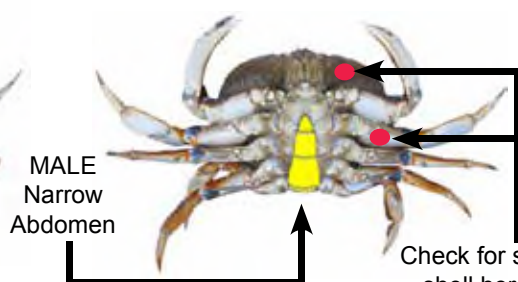
Photo by ODFW

Black-tipped claws, reddish shell, shell much wider than long

How to Check for Shell Hardness



FEMALE
Wide
Abdomen



MALE
Narrow
Abdomen

Check for soft shell here

Abdomen of female and male Dungeness